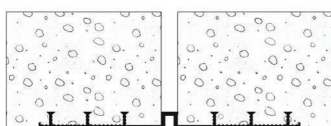
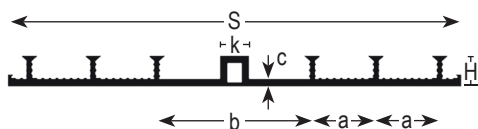
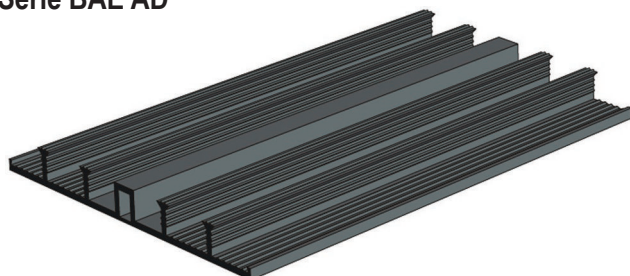


# Waterstops

## Série BAE

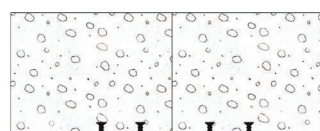
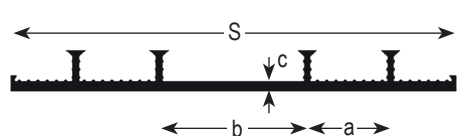
### Série BAE AD



Perfis para a selagem de juntas de dilatação de superfície.

*External expansion joint waterstops.*

### Série BAE AA



Perfis para a selagem de juntas de construção externas.

*External construction joint waterstops.*

Série BAE AD							
Tipo	AD 200	AD 250	AD 250/35	AD 320	AD 320/35	AD 500/20	AD 500/35
S [mm]	200	240	240	320	320	500	500
b [mm]	70	80	80	110	110	150	150
c [mm]	4	4,5	4,5	4,5	4,5	5	5
H [mm]	20	25	35	25	35	20	35
k [mm]	20	20	20	20	20	20	20
a [mm]	40	45	45	45	45	50	50
n	4	4	4	6	6	8	8

n = quantidade de nervuras de ancoragem / n = number of anchoring ribs  
Tolerância dimensional DIN 16941 / Dimensional tolerances to DIN 16941

Série BAE AA							
Tipo	AA 200	AA 250	AA 250/35	AA 320	AA 320/35	AA 500	AA 500/35
S [mm]	200	240	240	320	320	500	500
b [mm]	70	80	80	110	110	150	150
c [mm]	4	4	4	4,5	4,5	5	5
H [mm]	20	25	35	25	35	20	35
a [mm]	40	45	45	45	45	50	50
n	4	4	4	6	6	8	8

n = quantidade de nervuras de ancoragem / n = number of anchoring ribs  
Tolerância dimensional DIN 16941 / Dimensional tolerances to DIN 16941

Accessórios de cofragem (calços de espaçamento, etc) disponíveis por encomenda.  
*Formwork accessories (spacers, etc.) upon request.*

Características do PVC / Material properties - PVC	Série BAE AD / Série BAE AA
Dureté shore / Shore hardness	70 +/- 5
Densidade / Density	1,33 +/- 0,03 g / m <sup>3</sup>
Carga de ruptura / Tensile strength	≥ 10 N / mm <sup>2</sup>
Alonamento máximo de ruptura / Elongation at break	≥ 250 %
Résistencia química / Chemical resistance	UV, água doce, salgada e de esgoto, agentes alcalinos, ácidos e bases <i>UV, fresh, salt and residual water, alkaline products, diluted acids and bases</i>

© Tous droits réservés - Dessins non contractuels - 02/2014