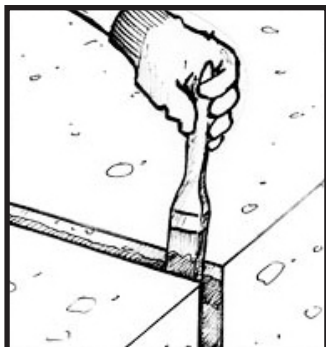


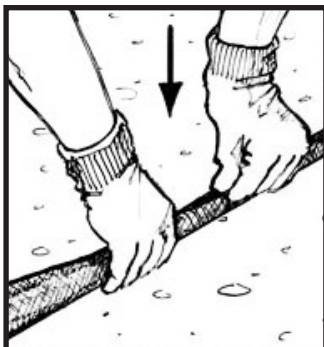


If necessary, remove formwork material such as polystyrene, VEDAPLAQUE honeycomb cardboard, etc.

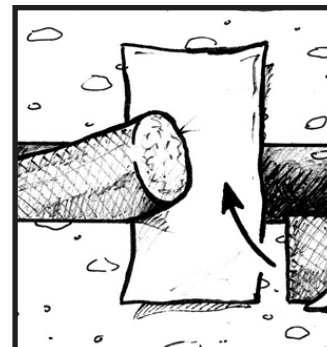
Repair all unsound concrete in and around the joint opening with compatible patching material. The contact surfaces must be clean, dry and free from contamination. Remove dust, using a brush or a broom.



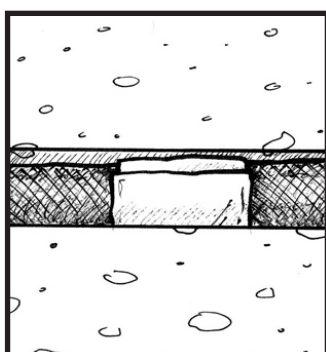
Apply a layer of VEDACOLLE C with a brush on both sides of the joint



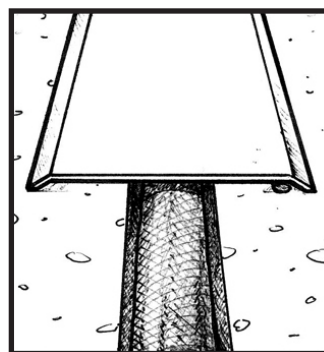
While the adhesive is still wet, insert VEDAFEU C and firmly press it by hand till perfect fit



Linking of 2 lengths \* (patented)



Connected lengths inserted into the joint



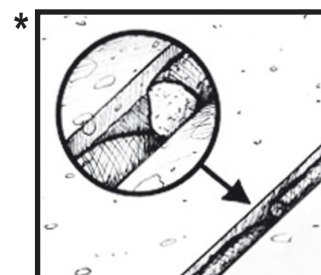
Joint cover in option

**Rated EI 240 without sealant, with or without joint cover**

VEDACOLLE adhesive coverage according to diameter of VEDAFEU C.

- VEDAFEU C Ø 12 - 20 mm. Minimum 20 to 40 g per linear meter (2 sides)
- VEDAFEU C Ø 30 - 40 mm. Minimum 40 to 80 g per linear meter (2 sides)
- VEDAFEU C Ø 50 - 80 mm. Minimum 60 to 120 g per linear meter (2 sides)
- VEDAFEU C Ø 90 - 120 mm. Minimum 80 to 160 g per linear meter (2 sides)
- VEDAFEU C Ø 150 - 180 mm. Minimum 100 to 200 g per linear meter (2 sides)

The accessories VEDACOLLE and linking piece for VEDAFEU C are part of the tested system and are compulsory



Overlapped linking (Only for 10 mm opening)